

■ Compression cable lugs, Al/Cu 16 - 300 mm²

- For screwing aluminium connections using copper washers
- For non-tension connections of Al cables to DIN 48201, part 1 and aluminium cables to DIN EN 50182
- For pre-rounded sector shaped conductors

Characteristics

- Barrier with solid copper screw-on palm
- Tube dimension to DIN 46329
- With markings for correct crimping

Material

- E-Al
- Copper to EN 13600

Surface

- bright

Order info

- sm/se-conductor needs to be pre-rounded!
- rm = round stranded
- sm = sector stranded
- se = sector solid

Cross section mm ²	Size of bolt Ø	Part No.	Code	Dimensions mm				Number of crimps		Weight		pcs.
				rm/sm	se	d1	d2	b	l	mech.	hydr.	
16	M 8	363R8	12	6.0	8.5	25	67.5	4	2	4.4	5.9	10
	M 10	363R10	12	6.0	10.5	25	67.5	4	2	4.2	5.7	10
25	M 8	364R8	12	6.8	8.5	25	67.5	4	2	4.4	5.8	10
	M 10	364R10	12	6.8	10.5	25	67.5	4	2	4.2	5.6	10
	M 12	364R12	12	6.8	13.0	25	67.5	4	2	3.9	5.3	10
35	M 8	365R8	14	8.0	8.5	25	76.5	5	2	4.4	6.3	10
	M 10	365R10	14	8.0	10.5	25	76.5	5	2	4.2	6.1	10
	M 12	365R12	14	8.0	13.0	25	76.5	5	2	3.8	5.8	10
50	M 8	366R8	16	9.8	8.5	25	76.5	5	2	4.4	6.4	10
	M 10	366R10	16	9.8	10.5	25	76.5	5	2	4.2	6.2	10
	M 12	366R12	16	9.8	13.0	25	76.5	5	2	3.9	5.9	10
70	M 10	367R10	18	11.2	10.5	25	84.5	6	3	4.2	7.4	10
	M 12	367R12	18	11.2	13.0	25	84.5	6	3	3.9	7.1	10
95	M 10	368R10	22	13.2	10.5	30	90.5	6	3	7.4	11.4	10
	M 12	368R12	22	13.2	13.0	30	90.5	6	3	6.8	10.8	10
	M 16	368R16	22	13.2	17.0	30	90.5	6	3	6.4	10.4	10
120	M 12	369R12	22	14.7	13.0	30	92.0	6	3	6.8	11.4	5
	M 16	369R16	22	14.7	17.0	30	92.0	6	3	6.4	10.8	5
150	M 12	370R12	25	16.3	13.0	30	104.0	6	3	6.8	13.1	5
	M 16	370R16	25	16.3	17.0	30	104.0	6	3	6.4	12.7	5
	M 20	370R20	25	16.3	21.0	35	107.5	6	3	10.1	16.4	5
185	M 10	371R10	28	18.3	10.5	30	105.0	6	3	10.3	18.6	5
	M 12	371R12	28	18.3	13.0	30	105.0	6	3	10.1	18.4	5
	M 16	371R16	28	18.3	17.0	30	105.0	6	3	9.3	17.6	5
	M 20	371R20	28	18.3	21.0	35	107.5	6	3	10.1	18.4	5

■ **Compression cable lugs, Al/Cu 16 - 300 mm²**

Cross section mm ²	Size of bolt Ø	Part No.	Code	Dimensions mm				Number of crimps		Weight		pcs.
				d1	d2	b	l	mech.	hydr.	100 pcs. Cu	~ kg Total	
240	M 10	372R10	32	21.0	10.5	35	118.5	8	3	12.1	22.5	5
	M 12	372R12	32	21.0	13.0	35	118.5	8	3	11.8	22.2	5
	M 16	372R16	32	21.0	17.0	35	118.5	8	3	11.0	21.4	5
	M 20	372R20	32	21.0	21.0	35	118.5	8	3	10.1	20.5	5
300	M 12	373R12	34	23.3	13.0	40	123.5	8	3	17.7	33.7	1
	M 16	373R16	34	23.3	17.0	40	123.5	8	3	16.9	32.9	1
	M 20	373R20	34	23.3	21.0	40	123.5	8	3	16.0	32.0	1

▶ Tool: see chart page 121

■ **Compression cable lugs, Al/Cu 10 - 400 mm²**

- For screwing non-tension aluminium connections using copper washers
- For non-tension connections of Al cables to DIN 48201, part 1 and aluminium cables to DIN EN 50182
- For pre-rounded sector shaped conductors



Characteristics

- With Cu eye in screw-on area
- With markings for correct crimping

Material

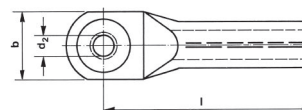
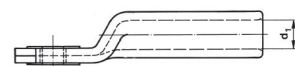
- E-Al
- Copper to EN 13600

Surface

- bright

Order info

- sm/se-conductor needs to be pre-rounded!
- rm = round stranded
- sm = sector stranded
- se = sector solid



Cross section mm ²	Size of bolt Ø	Part No.	Code	Dimensions mm				Number of crimps		Weight		pcs.
				d1	d2	b	l	mech.	hydr.	100 pcs. Cu	~ kg Total	
10	M 6	302R6	10	5.0	6.5	18	52	4	2	0.260	1.20	10
	M 8	302R8	10	5.0	8.5	22	52	4	2	0.580	1.50	10
16	M 8	303R8	12	5.8	8.5	22	52	4	2	0.600	1.95	10
	M 10	303R10	12	5.8	10.5	25	52	4	2	0.600	2.00	10
25	M 8	304R8	12	6.8	8.5	22	60	4	2	0.625	2.00	10
	M 10	304R10	12	6.8	10.5	25	60	4	2	0.900	2.10	10
35	M 10	305R10	14	8.0	10.5	26	67	5	2	0.800	3.00	10
	M 12	305R12	14	8.0	13.0	30	67	5	2	1.120	3.10	10
50	M 10	306R10	16	9.8	10.5	27	72	5	2	0.900	3.60	10
	M 12	306R12	16	9.8	13.0	30	72	5	2	1.120	3.80	10
70	M 10	307R10	18	11.2	10.5	29	86	6	3	1.075	5.60	10
	M 12	307R12	18	11.2	13.0	32	86	6	3	1.300	5.70	10
95	M 10	308R10	22	13.2	10.5	32	90	6	3	1.435	10.00	5
	M 12	308R12	22	13.2	13.0	35	90	6	3	1.735	9.50	5
	M 16	308R16	22	13.2	17.0	38	90	6	3	2.655	10.00	5