

■ **Parallel groove clamps, Cu 2.5 - 150 mm<sup>2</sup>**

- For screwing conductors to VDE 0295 Class 1 and 2, for example in lighting protection areas

**Characteristics**

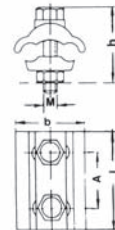
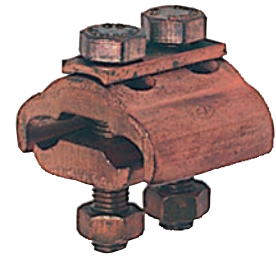
- For outdoor assembly
- Version with 2 screws
- With thrust plate for uniform pressure distribution

**Material**

- Cu-ETP
- Screw: high tensile copper alloy F 60
- Nut: Copper

**Surface**

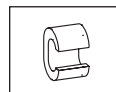
- bright



Cross-section mm <sup>2</sup>	Part No.	Dimensions mm					Weight/100 pcs. ~ kg	pcs.
		b	A	h	l	M		
2,5 - 16	<b>SAK31</b>	19.5	13,0	16	22	M5	4,1	10
2,5 - 25	<b>SAK33</b>	25,5	14,0	21	27	M6	7,0	10
	<b>SAK35</b>	25.0	15.0	22	30	M7	7.9	10
6 - 35	<b>SAK37</b>	30.0	16,0	23	32	M7	10,2	10
6 - 50	<b>SAK39</b>	33,0	17,0	26	32	M7	12,8	10
10 - 50	<b>SAK41</b>	32.5	18.0	27	34,5	M8	14,7	10
6 - 70	<b>SAK43</b>	37.0	19.0	29	38,5	M8	19,1	5
10 - 95	<b>SAK45</b>	41,0	20	36	43	M8	25,0	5
16 - 150	<b>SAK47</b>	52.5	26.0	40	52	M10	39.0	5

■ **C-type clamps, Cu 16 - 95 mm<sup>2</sup>**

- For branching identical cross-sections e.g. to VDE 0295 Class 1 and 2
- No need to split the main conductor



**Characteristics**

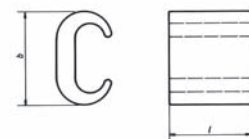
- Conductivity optimised by compound

**Material**

- Cu-ETP

**Surface**

- tin plated



**Order info**

- Bright finish version also available, part number appendix „bk“
- rm = round stranded
- re = round solid

Conductor size		Part No.	Dimensions mm		Weight/100 pcs. ~ kg	pcs.
Main conductor rm/re	Junction rm/re		b	l		
16/25	16/25	<b>CK16</b>	16.0	15	0.94	25
25/35	25/35	<b>CK25</b>	20.0	16	1.68	25

■ C-type clamps, Cu 16 - 95 mm<sup>2</sup>

Conductor size		Part No.	Dimensions mm		Weight/100 pcs.	
Main conductor rm/re	Junction rm/re		b	l	~ kg	pcs.
35/50	35/50	<b>CK35</b>	25.7	22	3.42	25
50/-	50/-	<b>CK50</b>	28.0	23	4.88	25
70/-	70/-	<b>CK70</b>	34.0	28	9.69	10
95/-	95/-	<b>CK95</b>	35.0	28	7.30	10

▶ Tool: see chart page 154



■ Clamps, C-type, copper, 2.5 - 185 mm<sup>2</sup>

- For branching unidentical conductor cross-sections, e.g. to VDE 0295, Class 1 and 2
- No need to split the main conductor

Characteristics

- Conductivity optimised by compound

Material

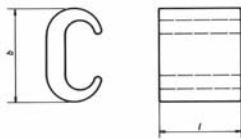
- Cu-ETP

Surface

- tin plated

Order info

- Bright finish version also available, part number appendix „bk“
- rm = round stranded
- re = round solid



Conductor size		Part No.	Dimensions mm		Weight/100 pcs.	
Main conductor rm/re	Junction rm/re		b	l	~ kg	pcs.
2.5 - 4/25 - 4	2.5 - 4/2.5 - 4	<b>MCK44</b>	9.8	8	0.185	25
6 - 10/10	4 - 6/4 - 10	<b>MCK1010</b>	12.0	12	0.460	25
10 - 16/16	4 - 10/4 - 10	<b>MCK1016</b>	19.0	17	1.900	25
16 - 25/25	4 - 10/4 - 10	<b>MCK1025</b>	19.0	17	1.900	25
16 - 25/25 - 35	16 - 25/16 - 35	<b>MCK3535</b>	20.0	17	1.750	25
35/50	4 - 25/4 - 25	<b>MCK2550</b>	24.8	23	4.400	25
35/50	16 - 35/25 - 50	<b>MCK5050</b>	26.5	23	4.200	25
50 - 70/-	4 - 35/4 - 35	<b>MCK3570</b>	33.8	28	10.700	10
95/-	16 - 35	<b>MCK3595</b>	41.0	30	15.000	10
95/-	35 - 70	<b>MCK7095</b>	41.0	30	14.000	10
120/-	35 - 120	<b>MCK120120</b>	45.0	30	16.550	10
150/-	70 - 150	<b>MCK150150</b>	53.0	35	23.000	5
185/-	95 - 185	<b>MCK185185</b>	60.0	40	33.000	5

▶ Tool: see chart page 154

■ **H-type clamps, Cu 70 - 120 mm<sup>2</sup>**

- For branching identical cross-sections e.g. to VDE 0295 Class 1 and 2
- No need to split the main conductor



**Characteristics**

- H-shape makes for simple processing
- Conductivity optimised by compound

**Material**

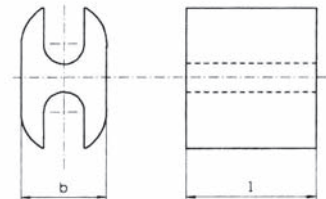
- Cu-ETP

**Surface**

- tin plated

**Order info**

- Bright finish version also available, part number appendix „bk“
- rm = round stranded
- re = round solid



Conductor size		Part No.	Dimensions mm		Weight/ 100 pcs. ~ kg	pcs.
Main conductor rm/re	Junction rm/re		b	l		
2.5 - 4/25 - 4	2.5 - 4/2.5 - 4	<b>AH7070</b>	9.8	8	0.185	25
2.5 - 4/25 - 4	2.5 - 4/2.5 - 4	<b>AH9595</b>	9.8	8	0.185	25
2.5 - 4/25 - 4	2.5 - 4/2.5 - 4	<b>AH120120</b>	9.8	8	0.185	25

▶ Tool: see chart page 155

■ **Compound for clamps**

- For optimum conductivity of the clamps

**Characteristics**

- Water-resistant
- With corundum for destroying the oxidation layer on contact surfaces



Part No.	Contents net/box
	~ kg
<b>KF125</b>	0.125