

■ **T 15**

Special hydraulic oil

**Characteristics**

- For all hydraulic pumps, exception: Safety cutting units
- 5 l canister

Item	Part No.
Special hydraulic oil	<b>T15</b>



■ **ESSG 85/3**

Battery powered safety cutting unit, max. Ø 85 mm



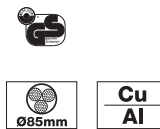
- **BG-tested safety cutting unit to cut live copper and aluminium cables without steel armouring up to a rated voltage of 60 kV**
- **Single-conductor live cables without steel armouring can be cut under voltage of up to 110 kV/60Hz**
- **High-performance 3.0 Ah NiMH battery**

**Characteristics**

- Two stage hydraulics
- Quick motor stop
- Electronic control
- Light diode for battery charge and maintenance control
- Light diode display service intervals after 250 cuts
- High-pressure hose, 10 m



Technical Data	
Cutting range:	max. Ø 85 mm (depending on cable type)
Operating pressure:	625 bar
Hydraulic oil:	„Special oil Rivolta S.B.H.11“ High-grade biologically degradable, non-hazardous to waters
Battery voltage:	12 V
Battery capacity:	3.0 Ah, approx. 17 cuts (4 x 240 mm² NYY)
Charging time:	40 - 60 min
Ambient temperature:	-20°C to +40°C



Item	Part No.
Battery powered safety cutting unit max Ø 85 mm	<b>ESSG853</b>
Scope of supply	Part No.   Page
Battery 12 V / 3.0 Ah NiMH	RA5   350
Charger for NiCd and NiMH batteries, 230 V mains operated	LG4F   351

Accessories	Part No.	Page
Heat shield cover 1.80 m x 1.80 m	HSD1	
Heat shield cover 1.20 m x 0.90 m	HSD2	
Heat shield cover 0.45 m x 0.60 m	HSD3	



### SSG

Hydraulic safety cutting devices with foot pump

- BG-tested safety cutting unit to cut live copper and aluminium cables without steel armouring up to a rated voltage of 60 kV
- Single-conductor live cables without steel armouring can be cut under voltage of up to 110 kV/60Hz

### Characteristics

- Cutting head with quick coupling , rotates 360°
- Two stage hydraulics
- Safety high-pressure hose, 10 m



Technical Data			
	SSG 85/3	SSG 90/2	SSG 120/2
Cutting range:	max. Ø 85 mm	max. Ø 90 mm	max. Ø 120 mm
Operating pressure:	625 bar	625 bar	625 bar
Hydraulic oil:	„Special oil Rivolta S.B.H.11“	„Special oil Rivolta S.B.H.11“	„Special oil Rivolta S.B.H.11“
Weight:	26.0 kg	31.0 kg	32.0 kg
Ambient temperature:	-20°C to +40°C	-20°C to +40°C	-20°C to +40°C

Item	Part No.
Safety cutting unit max. Ø 85 mm	<b>SSG853</b>
Safety cutting unit max. Ø 90 mm	<b>SSG902</b>
Safety cutting unit max. Ø 120 mm	<b>SSG1202</b>
Scope of supply	Part No.      Page

Accessories	Part No.	Page
Heat shield cover 1.80 m x 1.80 m	HSD1	
Heat shield cover 1.20 m x 0.90 m	HSD2	
Heat shield cover 0.45 m x 0.60 m	HSD3	

■ **Bus bar tool centre**

- Basic tool for bending, punching and cutting solid and laminated bus bars up to 120 x 12 mm
- Compact design and low weight

**Characteristics**

- Crimping force: 185 kN at 700 bar
- Max. operating pressure: 700 bar
- Dimensions (LxBxH): 480 x 500 x 360 mm
- Weight: 51 kg
- Max. pump conveying capacity: 1.5 l/min
- Required oil volume: 0.15 l



Item	Part No.
Bus bar tool centre	<b>50052240</b>

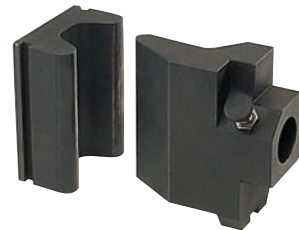
Accessories	Part No.	Page
Bending tool 5.0 mm, bending radius	50052250	381
Bending tool 8.0 mm, bending radius	50052268	381
Punching tool I	50052128	382
Punch and die holder for punching tool I		
Punching tool III	50766919	383
Punch and die holder for punching tool I		
Cutting tool	50052144	384
Offset tool	50052152	384
Aluminium box (empty)	50052160	385
Electro hydraulic drive unit	50052799	413

■ **Bending tools**

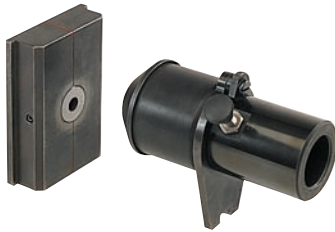
- For Al/Cu materials to max. 120 x 12 mm
- Bending radius 5.0 und 8.0 mm

**Characteristics**

- max. bending angle 100°
- Weight: 7.1 kg



Item	Part No.
Bending tool 5.0 mm, bending radius	<b>50052250</b>
Bending tool 8.0 mm, bending radius	<b>50052268</b>



**■ Punching tool I**

- For hole diameters from 6.5 - 21 mm
- For Al/Cu solid bars up to max. 12 mm and steel to 10 mm thick

**Characteristics**

- Weight: 4.5 kg

Item	Part No.
Punching tool I	50052128

**■ Punch and die holder for punching tool I**

**Characteristics**

- For Al/Cu solid rails to max. 12 mm



Item	Part No.
Punches and dies Ø 6.5 mm	50052276
Punches and dies Ø 8.5 mm	50052284
Punches and dies Ø 11.0 mm	50052292
Punches and dies Ø 13.0 mm	50052306
Punches and dies Ø 15.0 mm	50052314
Punches and dies Ø 17.0 mm	50052322
Punches and dies Ø 21.0 mm	50052330
Oblong punch and die 6.5 x 13 mm	50052349
Oblong punch and die 8.5 x 16 mm	50052357
Oblong punch and die 11.0 x 20 mm	50052365
Oblong punch and die 13.0 x 20 mm	50052373
Oblong punch and die 17.0 x 20 mm	50052381

**■ Punching tool III**

- Al/Cu solid and laminated bus bars to max. 12 mm and steel to 10 mm thick

**Characteristics**

- For hole diameters from 6.5 - 21 mm
- Weight: 4.5 kg



Item	Part No.
Punching tool III	<b>50766919</b>

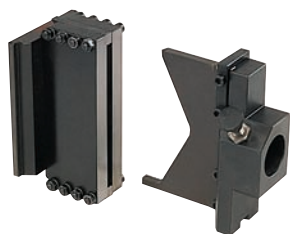
**■ Punch and die holder for punching tool I**

**Characteristics**

- Al/Cu solid and laminated bus bars to max. 12 mm and

Item	Part No.
Punches and dies Ø 6.5 mm	<b>50115286</b>
Punches and dies Ø 8.5 mm	<b>50115294</b>
Punches and dies Ø 11.0 mm	<b>50115308</b>
Punches and dies Ø 13.0 mm	<b>50115316</b>
Punches and dies Ø 15.0 mm	<b>50115324</b>
Punches and dies Ø 17.0 mm	<b>50115332</b>
Punches and dies Ø 21.0 mm	<b>50115340</b>
Oblong punch and die 6.5 x 13 mm	<b>50115359</b>
Oblong punch and die 8.5 x 16 mm	<b>50115367</b>
Oblong punch and die 11.0 x 20 mm	<b>50115375</b>
Oblong punch and die 13.0 x 20 mm	<b>50115383</b>
Oblong punch and die 17.0 x 20 mm	<b>50115391</b>





■ Cutting tool

**Characteristics**

- For Al/Cu materials to max. 120 x 12 mm
- Weight: 5.3 kg

Item	Part No.
Cutting tool	<b>50052144</b>



■ Offset tool

- Insert plates
- Maximum tool offset 12 mm (Al/Cu)

**Characteristics**

- For Al/Cu materials max. 120 x 12 mm
- Dimensions (LxBxH): 175 x 90 x 135 mm
- Weight: 10.0 kg

Item	Part No.
Offset tool	<b>50052152</b>

■ **Aluminium box (empty)**

**Characteristics**

- Suitable for storing accessories
- Dimensions (LxBxH): 350 x 250 x 200 mm
- Weight: 4.3 kg

Item	Part No.
Aluminium box (empty)	<b>50052160</b>

