

■ Ultra Tugger™ cable puller 6800-22 CE

- Lightweight, portable cable puller
- Direct gear drive
- Tapered capstan and patented rope guide system for better control of the rope when feeding onto the capstan
- Force gauge for monitoring the max. pulling force of 3.6 t



Technical Data	
Maximum pulling force:	3.6 t
Continuous output:	3 t
Pulling rate:	2.7 m/min at no load, 2.4 m/min at 900 kg load 2.3 m/min at 1,800 kg load 2.1 m/min at 2,700 kg load 1.8 m/min at 3,600 kg load
Dimensions:	approx. 30 x 66 x 22 cm
Weight:	approx. 39 kg
Motor:	230 V, 50 Hz

Item	Part No.	Page
Ultra Tugger™ cable puller 6800-22 CE	50031961	
Scope of supply	Part No.	Page
Force gauge	50010697	
Floor-mount	50008650	

Accessories	Part No.	Page
Chain mount for conduits and round poles Ø 75 - 250 mm	50008668	710

■ Rope for cable puller 6800-22 CE

Characteristics

- Breaking strength approx. 14.2 t
- Rope diameter 22 mm
- Rope on rope stand



Item	Part No.
Rope for cable puller 6800-22 CE 91 m long	50341367
Rope for cable puller 6800-22 CE 182 m long	50341375
Rope for cable puller 6800-22 CE 365 m long	50341383
Rope stand for ropes 91 and 182 m	50343629
Chain mount for conduits and round poles Ø 75 - 250 mm	50008668

■ **Tray tape sheaves**

Characteristics

- Steel frames with forged hook 25 mm
- Sheaves from aluminium alloy with self-lubricating bearings
- Max. rated capacity 3.6 t
- For hooking



Item	Part No.	External diameter mm	Internal radius mm	Width mm	Weight: kg
Tray type sheaves 125 mm	50008722	300	100	125	12,0
Tray type sheaves 150 mm	50008730	460	180	150	20,0
Tray type sheaves 165 mm	50008749	600	250	165	30,0

■ **Cable tray roller**

Characteristics

- Sheaves from aluminium alloy
- Self-lubricating bearings
- Steel frames for mounting to cable ducts up to 50 mm thickness

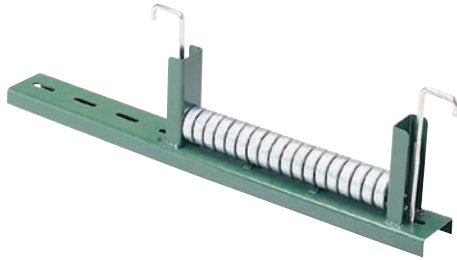


Item	Part No.	Length: mm	Width mm	Weight: kg
Cable tray rollers 125 mm	50153323	300	125	5,0
Cable tray rollers 125 mm	50190946	560	125	8,0

■ Cable tray roller

Characteristics

- Steel ball-bearings
- Steel frames
- Mounting slots
- Universal mounting brackets



Item	Part No.	Version	Width of cable conduit mm	Weight: kg
Cable tray rollers 300 - 450 mm	50273833	Straight	300 - 450	3.6
Cable tray rollers 500 - 600 mm	50273841	Straight	500 - 600	4.5
Cable tray rollers 600 - 760 mm	50273868	Straight	600 - 760	5.9
Cable tray rollers 300 - 450 mm	50273884	Radius	300 - 450	5.0
Cable tray rollers 500 - 600 mm	50273892	Radius	500 - 600	5.4
Cable tray rollers 600 - 760 mm	50273906	Radius	600 - 760	5.9

■ Cable Cream™ cable pulling lubricant

Characteristics

- Adheres well without dripping
- Easy to remove
- Won't break after exposure to heat or freezing cold
- Quality cream (yellow) for quick and easy application



Item	Part No.
Cable Cream™ cable pulling lubricant 0.95 l	50352075
Cable Cream™ cable pulling lubricant 3.8 l	50352083

■ **Pulling grips Junior, closed**

Suitable for:

- For pulling cables with small diameters
- For manual pulling of supply lines in pipes and cable ducts

Characteristics

- Single weave galvanized steel mesh with flexible pulling eye



Item	Part No.	Length of meshwork mm	Lug length mm	Max. pulling force kN
Pulling grips, Junior, closed for cable diameters Ø 5 - 6 mm	50305964	110	83	0.3
Pulling grips, Junior, closed for cable diameters Ø 7 - 9 mm	50305840	110	83	0.4
Pulling grips, Junior, closed for cable diameters Ø 10 - 12 mm	50305867	180	96	0.8
Pulling grips, Junior, closed for cable diameters Ø 13 - 15 mm	50305883	220	110	1.1
Pulling grips, Junior, closed for cable diameters Ø 16 - 18 mm	50305905	255	130	1.7
Pulling grips, Junior, closed for cable diameters Ø 19 - 25 mm	50305921	255	146	2.4
Pulling grips, Junior, closed for cable diameters Ø 26 - 31 mm	50305948	300	165	3.4

